

# Community Five Year Recreation Plan

City of Otsego, Otsego Township & Otsego Public Schools  
Allegan County, Michigan



January 2015

Approved June 15, 2015  
Expire December 31, 2020

Community Description	
Recreation Plan Jurisdiction .....	1
Recreational Opportunities .....	3
Community Location.....	3
Population Statistics .....	4
Education .....	4
Administrative Structure	
Otsego Recreation Council.....	6
City of Otsego .....	8
Otsego Township .....	10
Otsego Public Schools .....	11
Recreation Inventory	
Public Parks .....	12
Memorial Park .....	12
Brookside Park.....	13
Northside Park .....	13
Otsego Public School Facilities .....	13
Privately-Owned Facilities .....	15
County Park Facilities.....	16
Regional Recreation.....	17
Recreation Programs .....	18
Description of Public Input Process	
Initial Public Meeting .....	19
School Questionnaire .....	19
Second Public Meeting.....	20
Plan Adoption.....	20
Sample Questionnaire .....	21
Public Notice .....	22
Meeting Minutes.....	23
Otsego Public Schools Resolution.....	25
Otsego Township Resolution.....	26
City of Otsego Resolution.....	27
Goals and Objectives	
Mission Statement.....	28
Long Range Goals and Objectives .....	28
Action Program	
Proposed Projects .....	29
Attachments	
Regional Planning Commission Review .....	31
Self-Certification Report MDNR.....	32

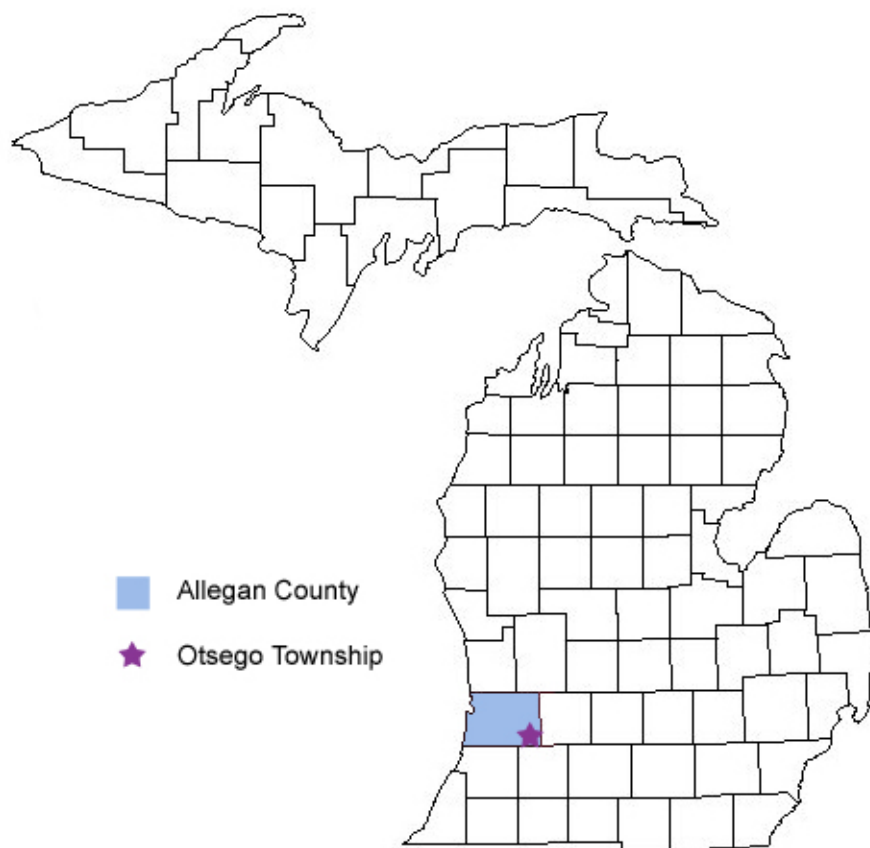
**List of Figures**

<u>Figure No.</u>	<u>Title</u>	<u>Page</u>
1	Regional Location Map	1
2	Map of Otsego City Limits	2
3	Map of Otsego Township Limits	2
4	Map of Park and School	14

## **COMMUNITY DESCRIPTION**

### **Recreation Plan Jurisdiction**

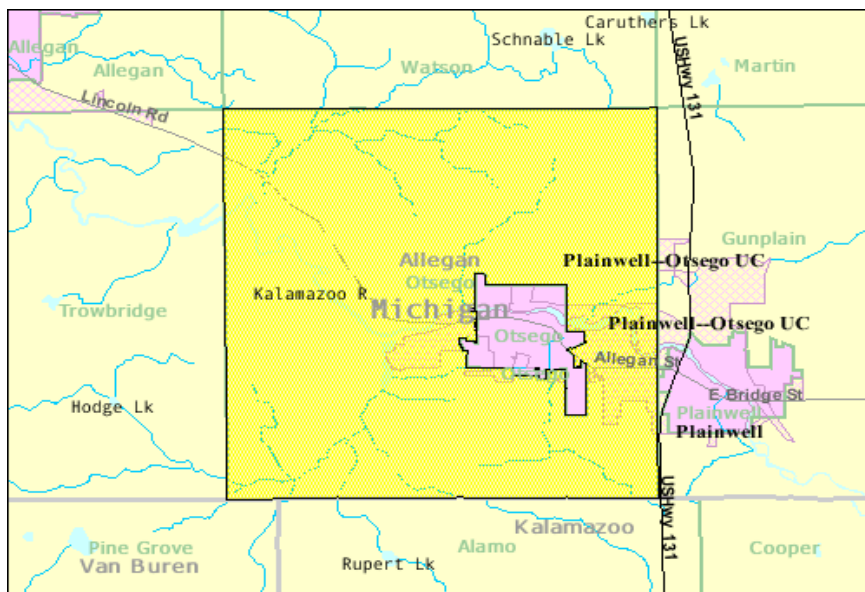
This recreation plan brings together three unique but related entities. In 1975, the City of Otsego, Otsego Township, and Otsego Public Schools formed a Recreation Council to oversee the provision of recreational and leisure services within the greater Otsego Community. As part of this Council's endeavor to provide quality services, they undertook the task of preparing a five year community recreation plan for the years of 1998 to 2002, 2005 to 2010, and now through 2020.



**Figure 1      Regional Location Map**



**Figure 2 Map of Otsego City Limits**



**Figure 3 Map of Otsego Township Limits**

## **Recreational Opportunities**

The City of Otsego offers park facilities and recreational programs to the public. The facilities include the three city parks - Memorial, Northside, and Brookside Parks - as well as youth and adult recreational leagues. The Township offers recreational opportunities for both children and adults, focusing more on recreational classes or programs, such as youth football (Rocket Football). The school offers athletic fields and building facilities to host games or recreational programs. Through the office of the Otsego Public Schools Community Programs, the following programs are offered:

- Student Enrichment - opportunities for Otsego school children to pursue activities which are not a part of the regular curricula
- Community Recreation - several sports leagues and other activities are coordinated for recreational purposes
- Community Services - other programs and services for community enrichment.

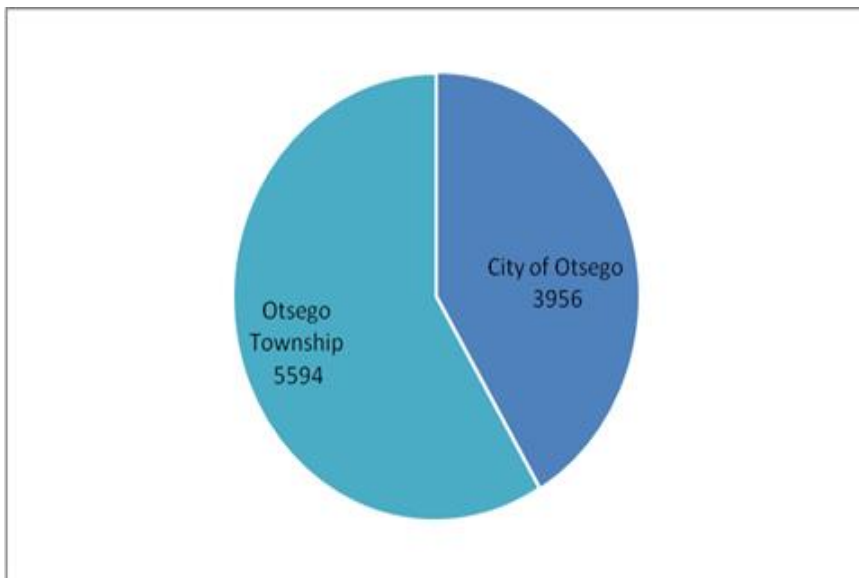
Since the Recreation Council is made up of representatives from the City, Township, and School system, it fosters an atmosphere of working together to meet the needs of the residents.

## **Community Location**

The Otsego Community is located 15 miles north of Kalamazoo and 35 miles south of Grand Rapids along U.S. 131 expressway in the eastern portion of Allegan County. The City of Allegan, the County Seat, is nine miles to the northwest. The City of Otsego is located two miles west of the interchange with the Township located between U.S. 131 and the City of Otsego. A Regional Location Map of the Otsego Community is shown in Figure 1. Additional maps detailing the boundaries of both the City and Township are in Figures 2 and 3 respectively.

## **Population Statistics**

The population of the community includes approximately 9,500 persons. According to the 2000 U.S. Census, 3,956 persons reside in the City of Otsego, while an additional 5,594 reside in Otsego Township. This is a population increase of 9% from the 2000 census. The pie chart below demonstrates the ratio of distribution of population between the Township and the City. Growth within the Township is expected to increase at a higher rate than the City, as more undeveloped land is currently available for housing within the Township. Density within the City is much higher with 1,911 persons per square mile compared with 168 persons per square mile in the Township. The Otsego School District covers 85 square miles encompassing parts of Allegan, Kalamazoo, and Van Buren Counties. The Otsego Public School District currently has 2250 students registered as attending with a School District population of approximately 15,000.



## **Education**

The Otsego Public Schools system has an excellent educational reputation at all levels and offers a variety of extra-curricular activities. As a Class “B” school, it is large enough to offer choices for students in the areas of Fine Arts, World Language, and Business, as well as Advanced Placement courses in all core areas. Otsego High School students have opportunities to dual enroll as well as apply for Early College through Allegan AESA where they can earn an Associate’s degree by finishing a thirteenth year with the district. However, classes are still small enough to provide individual attention to all students.

Elementary and secondary educational opportunities are also provided by two local parochial schools, St. Margaret’s Catholic School, Peace Evangelical Lutheran School, and the First Baptist Church Academy.



The Allegan County Area Educational Service Agency, located fifteen minutes west of Otsego, operates the Allegan Career and Technical Education Center. ACATEC offers outstanding opportunities for area high school juniors and seniors to receive training in high-wage, high-demand vocations. Currently, there are seventeen programs offered, each with an advisory committee to ensure that students are trained in relevant, cutting-edge technologies. ACATEC also offers students the ability to begin their college experience while in high school through Early, Middle, and Direct Credit options.

ACATEC will gladly partner with business and industry to provide specific training that meets employers' needs. Employers should call 269-673-3121 for details.

Further education opportunities abound near Otsego. The City of Otsego is within a 45 minute drive of several colleges and universities in Western Michigan. A list of some of those available is shown below. Also available, but not listed, are several trade and technical education providers.

Kalamazoo: Western Michigan University, Kalamazoo College, Kalamazoo Valley Community College, Davenport University, Spring Arbor University, Cornerstone University, Career Quest Learning Center, Ross Medical Education Center, Everest Institute

Grand Rapids: Aquinas College, Baker College, Calvin College & University, Central Michigan University Satellite, Grace Bible College, Cornerstone University, Grand Rapids Community College, Grand Valley State University, Jordan College, Michigan State University Satellite, Spring Arbor College Satellite

Note: Educational facility information was taken from the Otsego Municipal Website.



## **ADMINISTRATIVE STRUCTURE**

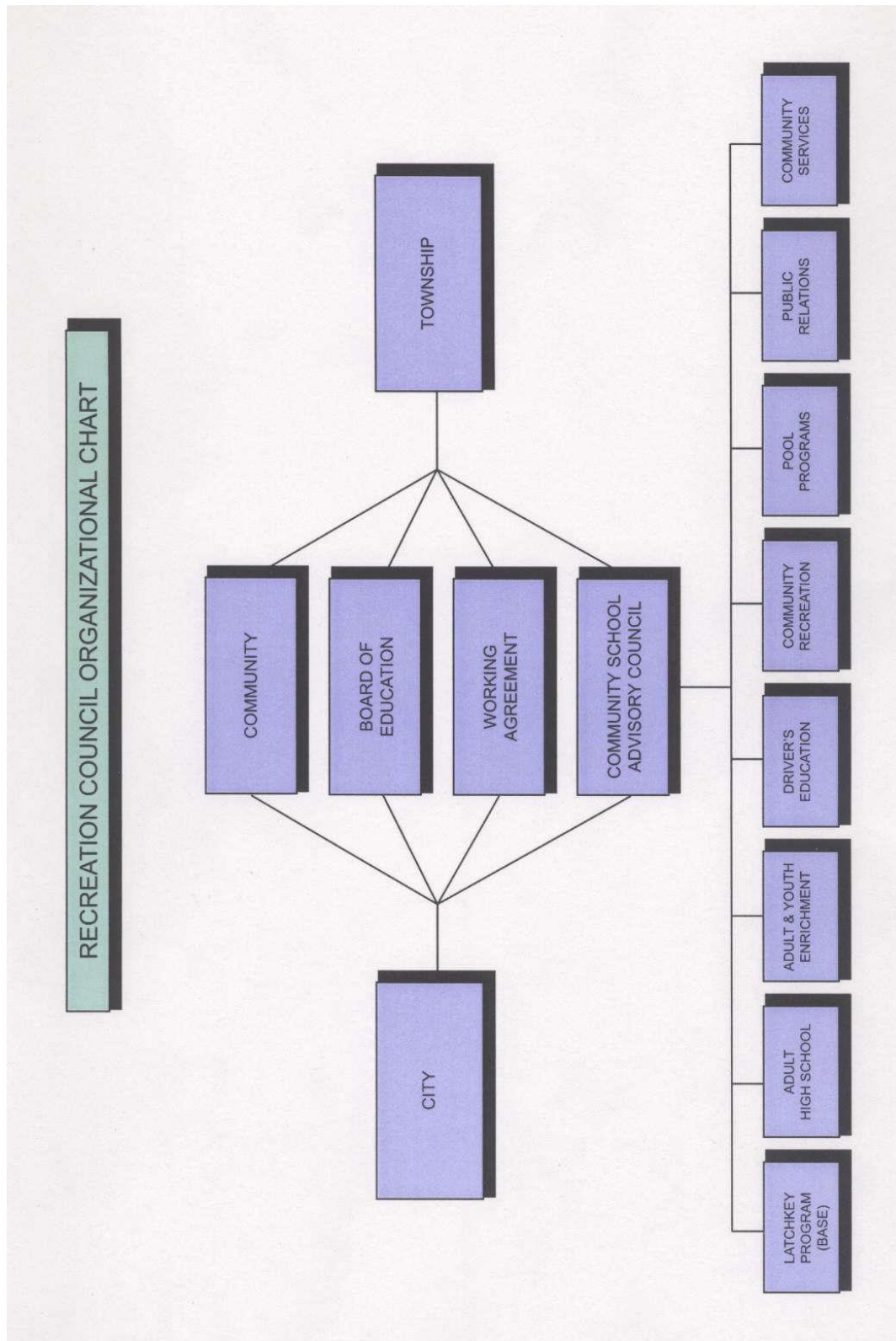
The Administrative Structure section defines the organizational structure for the Recreation Council, City of Otsego, Otsego Township, and Otsego Public Schools. A description of government structure, budgets, and support for recreation is discussed. Organization charts for each of the entities have been included.

### **Otsego Recreation Council**

In 1975 the Otsego community initiated a formal Otsego Recreation Council to address the recreational needs of the local community. The Recreation Council is comprised of two (2) representatives from the city of Otsego, two (2) representatives from the Otsego Township, and two (2) representatives from the Otsego Public Schools, and one (1) representative from each at-large. Ex-officio members of the Council include the City Manager, township Supervisor, and the Community Schools Coordinator.

The responsibility of the council is to provide a variety of educational, recreational, and leisure services for the area residents. The City, Township, and School District jointly fund a full-time Community School Individual to provide for recreational programming within the community. The Coordinator/Superintendent is also responsible for administering the meeting and directives of the Council. Meetings of the Council are held regularly.

The Council is advisory in nature and makes recommendations regarding the expenditure of funds for recreation programming and facility development. Expenses for programs and staff appear with the Otsego Public Schools annual budget. An administrative organizational chart of the Recreation Council is shown on page 7.



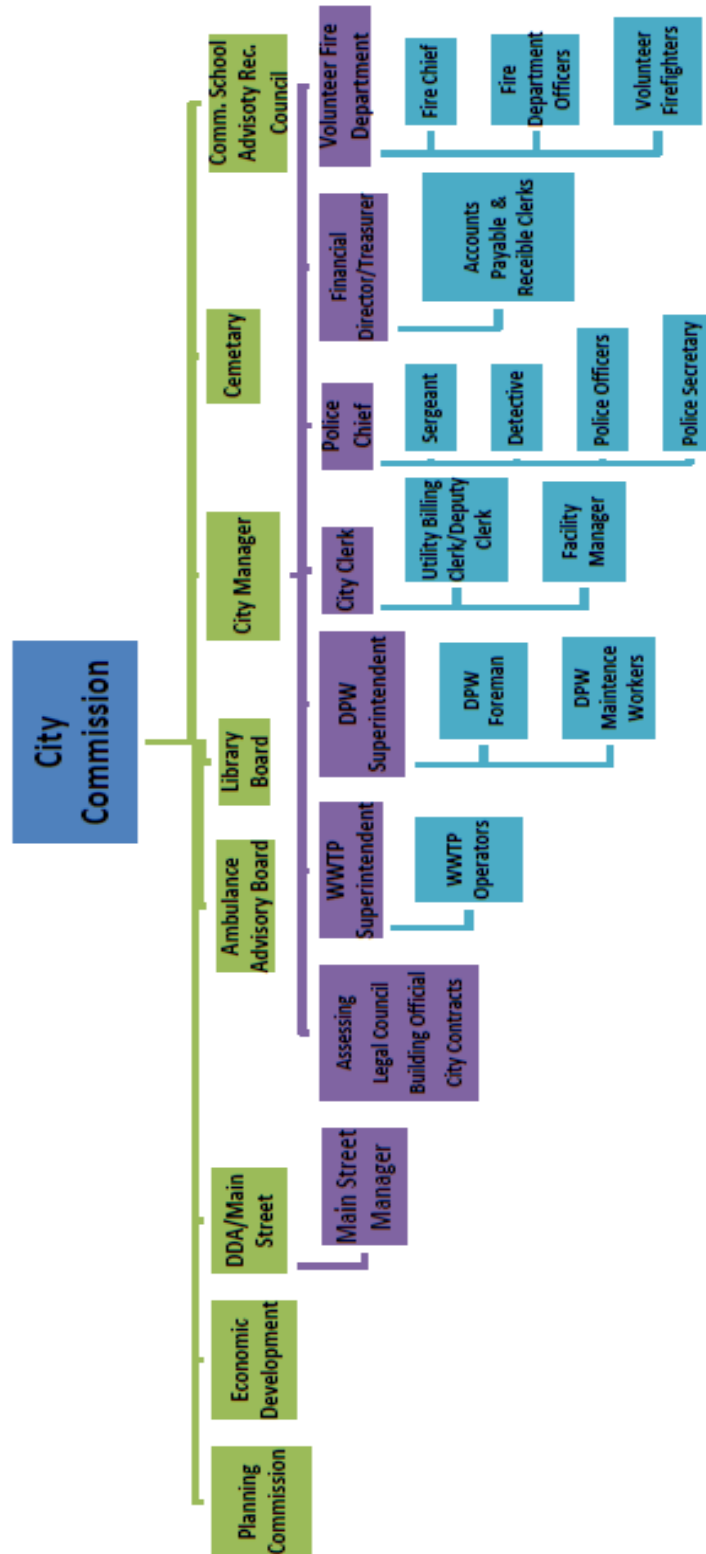
**City of Otsego**

The City of Otsego is governed by a commission-manager form of government with five (5) elected commissioners who elect a Mayor from among themselves; each elected to fill 2- or 4-year terms. The City Commission appoints the City Manager to fulfill the position of Chief Administrator for the City. An organizational chart of the administrative structure of the City of Otsego is shown on page 9.

In the City of Otsego, the Commission holds the sole authority for appropriating funds for Parks and Recreation purposes supported by the City. Two of the representatives serve on the Recreation Council. Specific funding provided by the City includes maintenance and development of the City parklands and facilities and support of joint projects undertaken by the Recreation Council. Funding for the yearly budgets and special projects is approved by the City Commission and is the responsibility of the City Manager to implement.

The Departments of Public Works, under the direction of the City Manager, provides for the maintenance of all City-owned recreation properties. Properties owned by the School District are maintained by the District. Otsego Township currently does not own any recreation properties or facilities. Security for the parks is provided by the Otsego Police Department. Maintenance for the parks is carried out by 500 hours of Department of Public works employees. The Community School Program provides programming of the parks. Community volunteers provide additional recreational maintenance and programming.

Funding of the maintenance for the City parks is through the City's General Fund, which is approved annually and remains fairly consistent in the level of funding. The annual general fund budget for 2014-2015 is approximately \$2 million. Items within the budget directly expended for recreation include Department of Public Works salaries, park maintenance, operating expenses, utilities, and support of the community school program for a total of \$90,000.

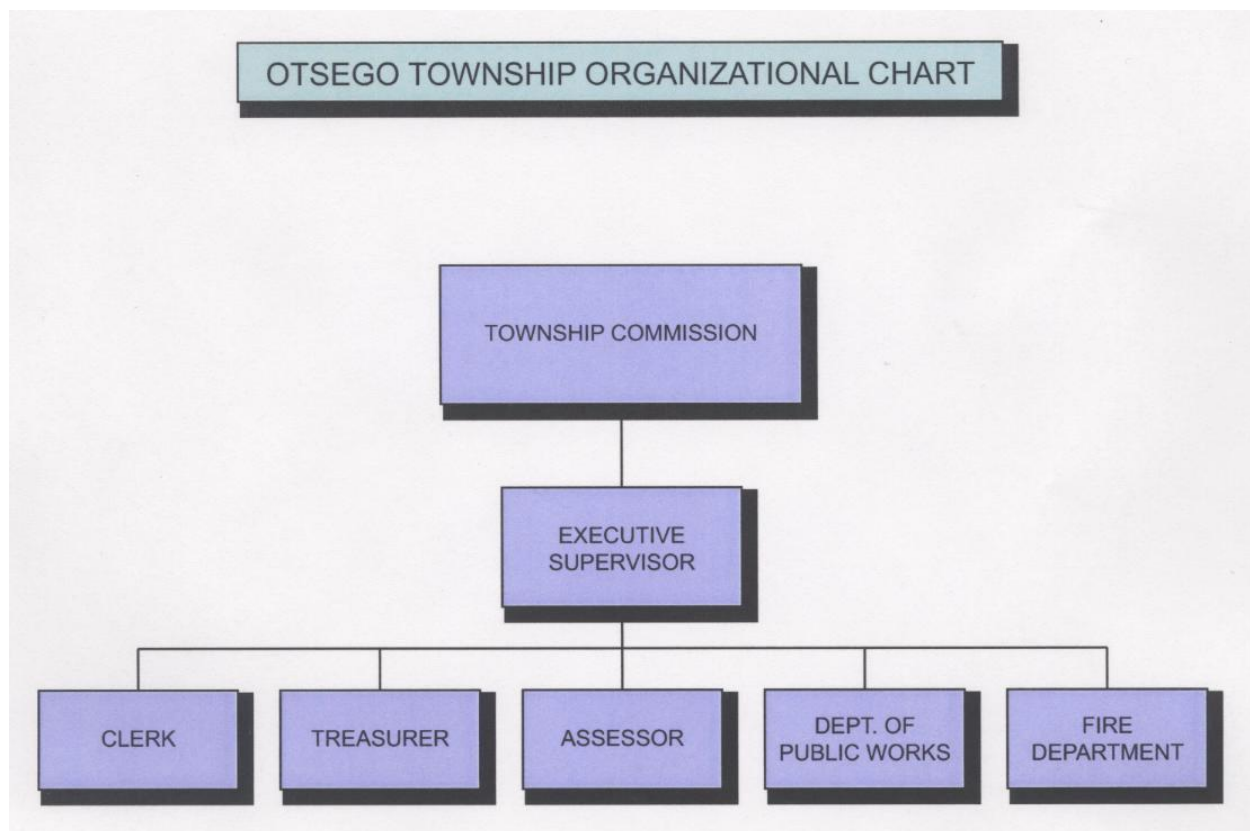


### **Otsego Township**

Otsego Township is governed by a seven (7) member elected Township Board consisting of the offices of Supervisor (1), Clerk (1), Treasurer (1), and four (4) Trustees. The Township board appoints the Supervisor to implement the directives received from the Board and maintain the daily operations of the Township. An organization chart of the administrative structure of the Township is shown on page 10.

The Township does not currently own or maintain any recreation facilities, but does jointly support the Community Education Director at the School District and has two (2) members on the Recreation Council.

The Township budget has been increasing as both commercial and residential growths continue. The annual general fund budget for 2014 - 2015 is approximately \$1M. Items within the budget directly expended for recreation include \$14,000 toward the Community Education program.



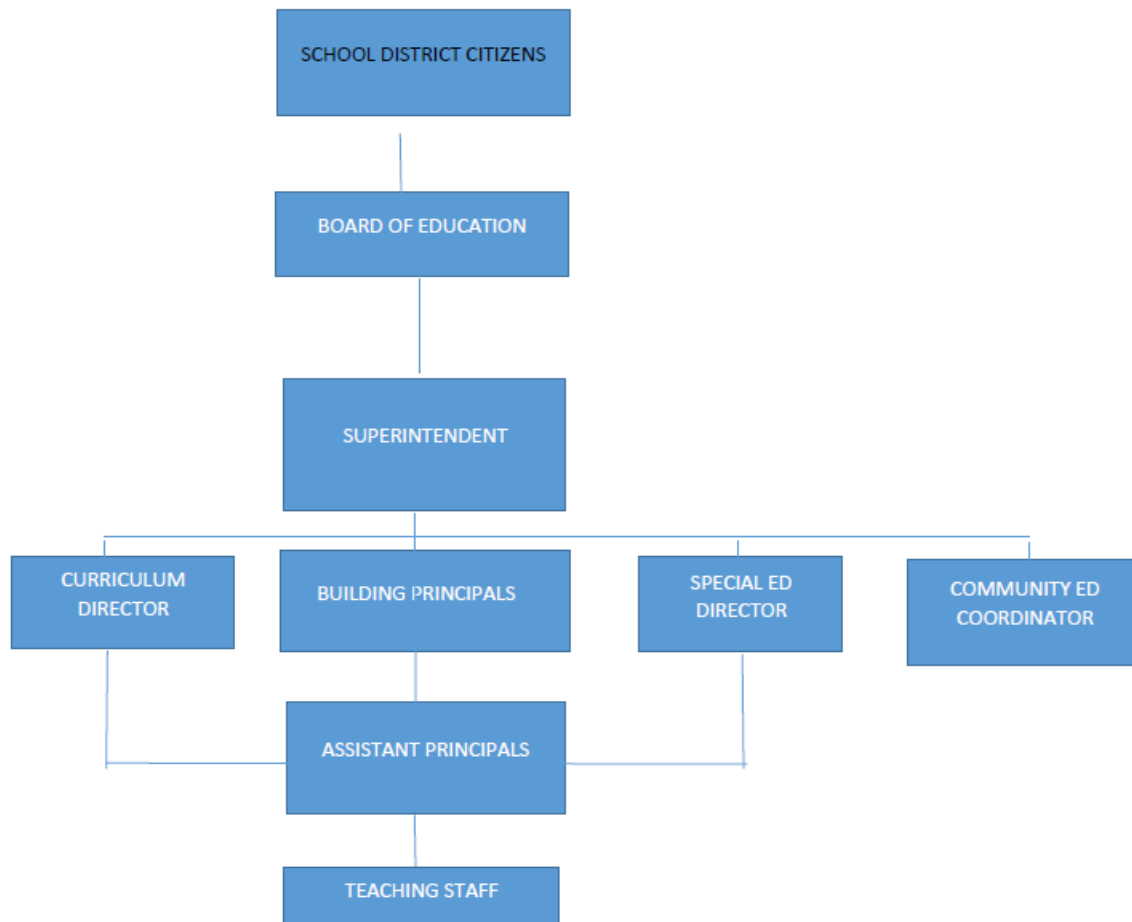
### **Otsego Public Schools**

The Otsego Public Schools serve approximately 2250 students and the District is considered a B class district. The School District is governed by a seven (7) member elected Board of Education, which appoints a Superintendent of Schools to fulfill administrative functions. The organization structure for the School District is shown on page 12.

Under the direction of the Superintendent, the full-time Community Education Coordinator coordinates programs, adult and youth enrichment, leisure time classes, senior citizen programs, driver's education, and recreation.

The annual general fund budget for 2014-2015, will be \$21.0 million with approximately 2% being allocated toward community recreation for staff and programs. Recreation facilities located on School District properties are maintained by the School District. The budget for the maintenance is lumped into the total maintenance budget of the district. Full-time and part-time employees assist in the maintenance of the facilities. The School District also employs a Summer Recreation Supervisor, and approximately 50 part-time employees who program and facilitate community recreation activities and are assisted by 75 to 80 adult community volunteers.

**OTSEGO PUBLIC SCHOOL ORGANIZATIONAL CHART**





## RECREATION INVENTORY

The Recreation Inventory section provides an inventory of existing public and private recreation opportunities as well as available athletic programs. Location maps for public parks and school sites have been included.

### Public Parks

Public Recreation and open space within the Otsego community includes three parks within the City of Otsego and four public school sites. The parks are include Memorial Park, Brookside Park, and Northside Park.

### Memorial Park

Memorial Park is a 20.38-acre multi-purpose facility located in the southern region of the City of Otsego bordered by Dix Street and Farmer Street. Prior to 1969 this park consisted of baseball, softball diamonds, track, tennis courts, and football field was used by the schools as a practice and game facility and by the City for summer recreation.

In 1969, with the development of new facilities at the high school, the football field was removed and from 1969 to 1976 the park was used primarily for passive recreation, rocket football, and summer recreation. In 1976 –77, the City applied for and received a Land and Water Conservation Fund Grant to complete a restroom/concession building and four softball/baseball diamonds. Since the initial grant award, which was completed in 1979, many improvements have been made through mini-grants, player fees, the Otsego Umpire Association, and donations. These improvements include the fencing of two additional softball diamonds, irrigating six ball diamonds, renovation of a picnic area, a storage building, basketball courts, a large children's play structure, a field to serve the Rocket Football program, paving of one parking lot, walks leading into the main complex, and two shuffleboard courts for senior citizens.

Most recently, a local effort successfully raised approximately \$100,000 to improve the veteran's memorial area, with a marble display, several flags, brick pavers and ornamental fencing.

The youth and adult summer recreation program activities held at Memorial Park are administrated by the Otsego Public School's Community Education Program. Currently at Memorial Park there is barrier free access to the play structure, the two basketball courts, the tennis courts, six ball diamonds, and two sand volleyball courts.



## **Brookside Park**

Brookside Park is located on the north side of M-89 at the eastern edge of the corporate city limits. The northern portion of the 74-acre property is bordered by the wetlands formed by the Kalamazoo River. In 1988 - 89 the City of Otsego received a \$138,000 grant for the purpose of improving and renovating the park. In the fall of 1990, the project was completed and included the construction of a small gazebo, repaving of existing roads, parking, pathways, play equipment, wetlands overlook, canoe launch, nature trail, security lighting, landscaping, and eight overnight



campsites. The City is often assisted in financing park improvements by many area businesses, industry, and organizations.



The master plan for a linear river walk park, which includes the connection of Brookside Park with downtown by way of a scenic river walk. Currently at Brookside Park there are no barrier free access walks within the park. The safety surfacing under the play structure is sand and not barrier free.

## **Northside Park**

Northside Park is a 4-acre parcel of land located at the intersection of Watson Road and River Street. This park boasts a large community built plays cape, which was completed in 1996. It also includes a large hockey rink, basketball courts, two open air pavilion, and paved sidewalks. Currently at Northside Park there is barrier free access to the play structure and to the large pavilion. The safety surfacing under the play structure is barrier free.

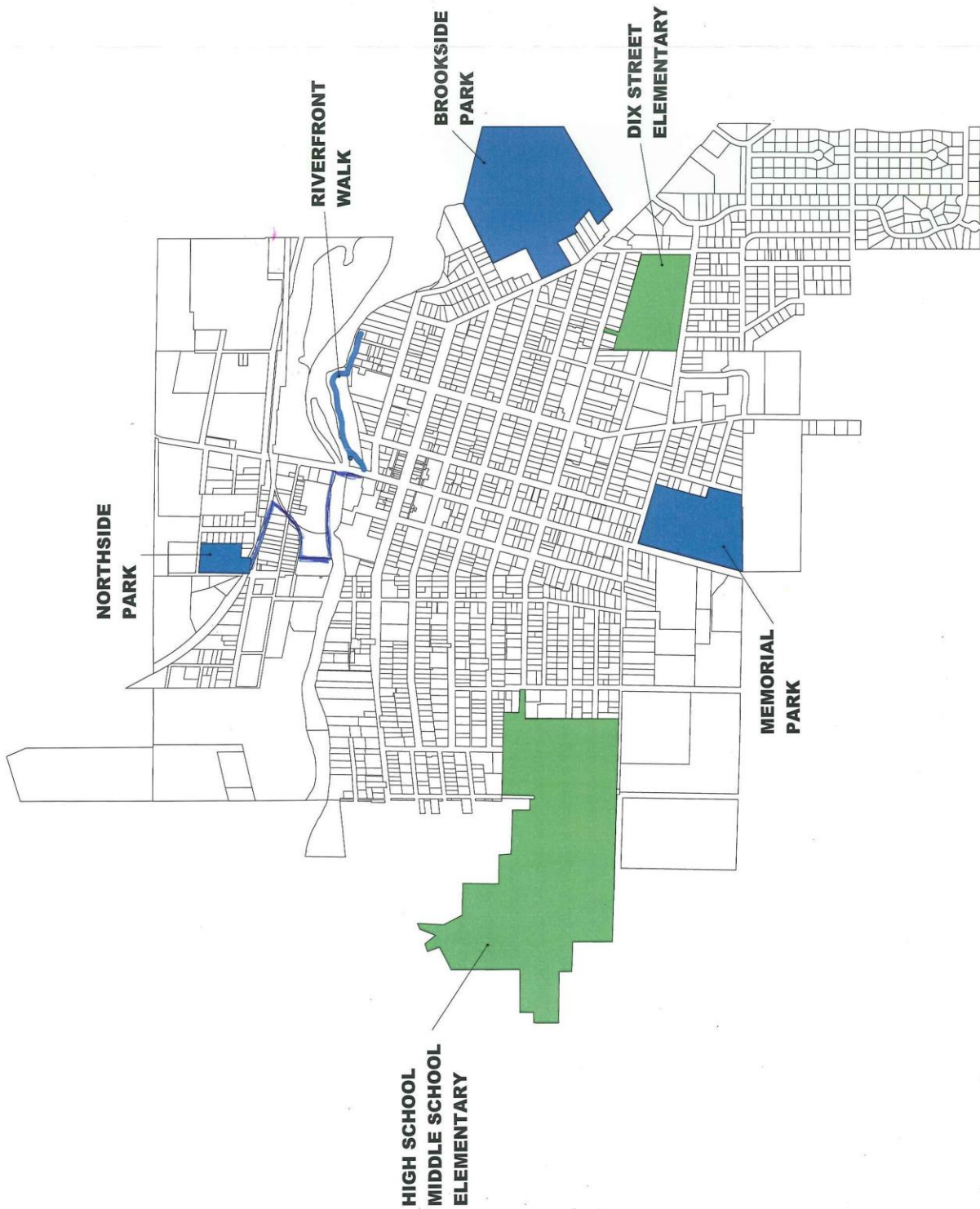


## **Otsego Public School Facilities**



Otsego Public School Facilities include a high school and middle school complex and three elementary school facilities. Each of the schools is located on sites which provide additional recreational opportunities for the community including gyms, classrooms, libraries, pool and outdoor facilities. The high school complex includes a school, baseball, softball, soccer, football fields, practice fields, tennis courts, auditorium and a football and track facility. The school has also developed a 6-foot wide trail through a wooded area to serve as an interpretive trail for the school science classes.





**Figure 4 – Map of Parks & School**

## **Privately-Owned Facilities**

Privately owned recreation facilities in the Otsego area include the following:

### Bittersweet Ski Resort:

Bittersweet Ski Resort is located on West River Road in Otsego Township, 2.5 miles from the City of Otsego. Bittersweet consists of a main lodge, bar, restaurants, snack bar, full rental ski shop, and equipment repairs. Three triple lifts, two double lifts, and two rope tows service the many downhill runs that range from beginner to expert.

### Timber Ridge Ski Resort:

Timber Ridge Ski Resort is located six miles south and three miles west of the City of Otsego off D Avenue in Alamo Township, which is located in the southern portion of the Otsego School District. Timber Ridge has 15 ski runs that are serviced by 4 chair lifts, 1 pommel lift, and 3 rope tows. They also have a bar, restaurant, ski shop, full rental, and equipment repairs.

### Lynx Golf Course:

The LYNX provides a perfect day for all guests. The 18 hole course also boasts six holes along the Kalamazoo River. The elevation changes and tree lined fairways provide an excellent setting that challenges your game and rewards your senses. This is a public course with an active membership program. The LYNX Grill is located in the clubhouse....perched high above the 18th green, offering a spectacular view of the Kalamazoo River Valley, and if you time it right, the perfect place to watch a gorgeous West Michigan sunset. The LYNX Grill menu provides affordable and delicious entrees along with typical golfer fare. The LYNX is located in the Southwest corner of Michigan, just five minutes from US 131, 22 minutes from Kalamazoo and 35 minutes south of Grand Rapids.

### Thornapple Creek Golf Course:

Thornapple Creek Golf Club has been a hidden gem in Southwest Michigan since 1978. Thornapple has gorgeous scenery, wildlife, rolling hills, ponds and nary a home site on the property. You truly feel like you're in Northern Michigan and the golf course is kept in impeccable condition. The Mike Shields design is challenging and you will need all the clubs in your bag! They cater to groups, leagues, outings, open play, business functions, weddings, receptions, showers, reunions and other parties. In addition to the beautiful golf course Thornapple Creek has a fantastic log cabin clubhouse and attached custom tent facility that overlooks a large pond. It is stunning and a must see for wedding, receptions, etc. Thornapple Creek is located in the northwest corner of Kalamazoo, Michigan just a short drive from the US 131 and I 94 Intersection.

### Kalamazoo Speedway:

Kalamazoo Speedway offers a 3/8 mile high-banked oval track, paved pit spaces for 145 cars with trailers/haulers. The stands can seat 6,500 fans with 43 skyboxes. Racing starts in April and runs through October. There is 30 acres of general parking. NASCAR sanctioned weekly racing with special races and events. Kalamazoo Speedway offers five concession stands, two party decks, plus the Hospitality Village. Located off US 131, just ten minute drive from Kalamazoo and only 40 minutes south of Grand Rapids.

**US 131 Motorsport Park:**

US 131 Motorsports Park has been a legendary 1/4 mile dragstrip since its construction in 1962. Originally known as Martin Drag way, the track underwent a complete 14 million dollar renovation and reopened in the spring of 2002. The Motorsports Park offers first class accommodations to all visitors. Families particularly appreciate the restroom facilities, arguably the most modern for any public facility. At US 131 Motorsport Park you can experience racing like few can, watch all the action from the comfort of one of their luxurious suites. The US 131 Grill is open during every event and serves delicious hot food and cold drinks. If you are looking for a corporate or group outing the US 131 Motorsports Park offers The Hospitality Tent Village. US 131 Motorsport Park is located in Martin, Michigan just 20 minutes from Kalamazoo and 30 minutes south of Grand Rapids.

The Moose Lodge is located on M-89 in Otsego Township, 3 miles west of the city. The Kalamazoo River flows through the south side of the property. Over 50 campsites, as well as a skeet shooting range, are located on the properties. The facilities are open to members and guests only.

Gun River Conservation Club is located in Gun Plain Township near the intersection of River Road and 12<sup>th</sup> Street. The Conservation Club promotes skeet and range shooting and provides hunter safety programs for area youth.

Gyms - Otsego Health and Fitness, Family Fitness.

Dance Studios – Patti Herm School of Dance, Shayna Kay Dance Kraze.

**County Park Facilities**

West Side Park is located on the Lake Michigan shoreline on Lakeshore Road about 1.5 miles south of M-89. The park has 11 acres with 360 feet of beach on Lake Michigan and includes a baseball diamond, restroom facilities, children's play area, 100 picnic tables, barbeque grills, and a dune stairway.

Gun Lake Park is located on the west shore of Gun Lake near the corner of Patterson and Shelbyville roads. The 4-acre park contains 450 feet of swimming beach, a playground, picnic tables, restrooms, and a boat launch.

Little John Park is located on Little John Lake in southwestern Allegan County on 113<sup>th</sup> Avenue, west of 34<sup>th</sup> Street. The park contains 113 acres including 150 picnic tables with grills and pavilion, swimming beach, bathhouse, restrooms, two softball diamonds, a basketball area, and facilities for volleyball.

Dumont Lake Park is located on the northeast shore of Dumont Lake with a boat launch at the northern end of 33<sup>rd</sup> Street, north of 122<sup>nd</sup> Avenue. The park contains 18.6 acres, 550 feet of sandy beach, picnic area and grills, pavilion, playground, and restrooms.

New Richmond Park is located at the historical village of New Richmond in the northwestern part of the county on Old Allegan Rd. The centerpiece of the historic park is a fully restored swing bridge which spans 400' across the Kalamazoo River. This swing bridge, which was originally built in 1879 was restored to its original splendor in 2004. It is listed in the National Register of Historic Places and connects park property on both the north and south sides of the

river. New Richmond Bridge Park includes five fishing piers, a half mile of boardwalk trails that run along the river and through the surrounding wetland areas, several interpretive signs, a new restroom building, a small picnic area and a completely redeveloped watercraft/boat launch and parking area.

Ely Lake Park is located within the Allegan State Game Area on 116<sup>th</sup> Ave. Ely Lake Campground offers a quality camping experience that is located close to town but has a definite backcountry feel. Ely Lake contains 73 primitive campsites (16 of which are open to equestrian camping), vault toilets and a swimming beach on Ely Lake. You will also find DNR Public Access sites to both Ely and Little Jon Lakes. (Ely has a “no motor” rule, so bring your canoe or row boat) Ely is open year round, so come out and enjoy some fabulous fall or winter camping! Ely also has sever trails for hiking and cross-country skiing.

Silver Creek Park and Campground located on 134<sup>th</sup> Ave, Hamilton is primarily an equestrian park and has both day use facilities and a primitive campground. Silver Creek is 320 acres in size and connects to over 25 miles of horseback riding trails. There are 75 campsites in the park, 65 of which are available for horse camping. Silver Creek also has 450 feet of frontage on Silver Creek, which is a spring fed trout stream. You will also find picnic tables and grills available in the day use area. The most beautiful and unique thing about Silver Creek is that the entire park is primarily wooded, providing for plenty of shade in the hot summer months and some spectacular foliage color in the fall. In keeping with the primitive setting, there are no modern restrooms or running water, but there are hand pumps and vault toilets. Silver Creek is open year round and has some spectacular fall and winter camping available. Silver Creek Park is one of three main staging areas to access the Allegan County Equestrian Trail System, with Ely Lake and Pine Point being the other two. Silver Creek is connected to over 25 miles of riding trails that primarily run through the beautiful Allegan State Game Area.

Pine Point Campground and Equestrian Park is located within the Allegan State Game Area. Pine Point Campground offers 35 primitive wooded campsites (12 of which are open to equestrian camping), 3 group sites, vault toilet facilities, and a swimming beach on Swan Creek pond. You will also find a DNR Public Access Site for those who like to boat or fish. Pine Point is open year around and has great trails for cross-country skiing and hiking.

Bysterveld Park encompasses a beautiful 70-acre parcel of natural area generously donated to the County by the late John and Josie Bysterveld. Construction on Phase I of the park was completed in the spring of 2006 and includes two miles of nature trails, a picnic shelter, playground, fishing pond, a grass picnic/recreation area, a restroom facility and parking for 75 vehicles. All of these amenities are ASA accessible. There are many splendid natural features that can be found on the park property, including rolling hills, wet meadows, wetlands, and woodland areas.

## **Regional Recreation**

Because of Otsego’s close proximity to the metro area of Battle Creek, Grand Rapids, and Kalamazoo, area residents have the opportunity to enjoy college and professional sports, cultural activities, and the many special event programs that are offered in these larger communities.

## **Recreation Programs**

Under the direction of the Community Education Coordinator, programs offered throughout the year include:

- Facility Rentals
- Hoopster Basketball (boys and girls)
- BASE Program (Before and After School Enrichment)
- Men's and Co-Ed Softball
- Open Gyms
- Co-Ed Volleyball
- Recreational and Instructional Swimming
- Summer Baseball/Softball
- Recreational Tennis
- Instructional Tennis
- Community Meetings
- Instructional Basketball
- Driver's Education
- Hunter's Safety
- Spiker's Volleyball
- Sports Camps
- Adult basketball
- Cheerleading
- Rising Stars Basketball

### **Community Club Sports:**

- Force Soccer
- AYSO Soccer
- Destroyers Wrestling
- Otsego Rocket Football
- Otsego Rocket Flag Football
- Otsego Rocket Cheerleading
- West Michigan Bulls Rugby

## **DESCRIPTION OF THE PUBLIC INPUT PROCESS**

### Initial Public Meeting

On May 29<sup>th</sup> 2015, the Rec Board held a public hearing at 1 p.m. at Otsego Public Schools. In attendance at this first meeting were representatives from the City, including the City Manager, the Schools, and the Otsego Recreation Council. There were also twelve 7<sup>th</sup> grade students in attendance. The group reviewed the goals that were previously established in the 2010 Recreation Plan, and asked for input regarding changes or modifications that they felt should be made to those goals.

This group thought that the upkeep of the current facilities (repair basketball courts, remove graffiti) should be the number one priority. They would also like to see more teen activities, drinking fountains, restroom facilities available and an ice cream shop brought to Memorial Park.

### School Questionnaire

The Recreation Council worked to develop a questionnaire that could be distributed in the school system to get input from school aged park users. Over 200 questionnaires were completed by 5<sup>th</sup> and 7<sup>th</sup> grade students. The questionnaires offered specific information and suggestions from a group that uses the recreational facilities on a more consistent basis. Below you will find the top answers for each of the questions:

#### **Park or School used most frequently:**

- Memorial Park
- Northside Park
- Dix St. Elem
- Washington St. Elem

#### **Rec programs needed:**

- Pool/aquatic programs
- Skate park for bikes and skateboards
- Music concerts
- More basketball programs

#### **Area of improvements:**

- Drinking fountains
- Basketball courts
- Graffiti Removed

#### **Most important part of the Parks:**

- Ball fields/basketball courts at Memorial Park
- Playgrounds
- Update current equipment

#### **Areas for improvement at Memorial Park**

1. Bigger and more playground equipment
2. Bathrooms
3. Drinking fountains
4. Basketball courts

The surveys were tabulated so their input was critical when the plan was developed. One area of concern to the students was the maintenance and removal of the graffiti of the playground equipment at the parks

#### Second Public Meeting

The second public input meeting, was held at Otsego Township Hall on June 2nd, at 7 p.m. to give the public an opportunity to comment on the draft plan. A power point presentation was used to show the current ideas. A variety of citizens were in attendance. Emphasis seemed to be on Memorial park including extending the fencing for the ball fields or possibly extending netting upward in the outfield of the ball fields. Input also included comments about updating playground equipment and maintenance of all the parks facilities. Ideas for more Community Events/Community Days and street vendors were also a popular topic.

From both public meetings, as well as the questionnaires, the suggestions offered focused on the improvements at Memorial Park. One theme consistent with the meetings and the surveys included upkeep of the Memorial Park facility, basketball courts, ball fields and playground equipment.

#### Plan Adoption

Following the second public meeting, members of the Recreation Council modified the plan, and presented it to the City for distribution to the Recreation Council, the Township, and the Schools for adoption. Copies of the resolutions are included.

**OTSEGO COMMUNITY  
PARKS & RECREATION SURVEY**

1. Which park or school facility do you use/visit most frequently?
2. What types of recreational programming is needed the most in Otsego?
3. If you could identify one area of improvement what would it be?
4. What is the most important part of the park/recreation system?
5. What is the least important part of the park/recreation system?



## **CITY OF OTSEGO PUBLIC NOTICE**

### **Community Recreation Council**

The City of Otsego, Otsego Township, and Otsego Public Schools invite residents to attend a Design and Planning Meeting for the development of the Parks and Recreation located in the Otsego community.

The Public Hearing will be held on:

**May 29, 2015, at 1:00 p.m.**  
**Otsego Public School - Board Room**  
**400 Sherwood Street**  
**Otsego MI 49078**

**June 2, 2015, at 7:00 p.m.**  
**Otsego Township Hall**  
**400 N. 16th Street**  
**Otsego MI 49078**

The purpose of the meetings is to receive comments and input regarding the parks and recreational facilities in the Otsego community.

If you have any questions regarding this notice, please contact Otsego City Manager Beard at 269-694-2741.

*Union Enterprise*  
Angela Cronen, Otsego City Clerk *5/11/15*

The Otsego Community Recreation Board held a Public Hearing on Friday, May 29th at Otsego Public Schools in the Administration Board Room.

The meeting was called to order by Thad Beard at 1:00 p.m. with the following Recreation Board Members present: Marcia Hukill, Scott Sleeman. Also present Jeff Haase Superintendent of Otsego Public Schools, and 12 students from the 7<sup>th</sup> grade class.

Mr. Beard opened the Public Hearing at 1:00 p.m.

Mr. Beard welcomed the audience and thanked them for attending the meeting. He gave a brief overview of the purpose of the Public Hearing, stating that the Otsego Community Recreation Five Year Master Plan needed to be updated and the ways that the Board is attempting to receive the input from the community to update the Plan.

He explained on how the Recreation Council has been gathering information, surveys were sent to the 5<sup>th</sup> and 7<sup>th</sup> grade students to fill out. Surveys were also available at the spring Parent/Teacher Conferences for members of the community to give their input. After all the surveys and information is compiled the Council will then present a Five Year Plan to Otsego Township, the Otsego School Board, and the City of Otsego for final approval, before sending the Plan to the Michigan Department of Natural Resources for consideration.

Mr. Beard gave a brief presentation that included: Recreational Opportunities, Memorial Park, Brookside Park, Northside Park, Otsego Public Schools, privately owned facilities, and County Park Systems. At the conclusion of the presentation, Mr. Beard asked for input from the students. Many of the students were excited to have the opportunity to give their input for ideas for the parks and rec. Some of the most popular comments included improvements in the basketball courts and playground equipment at Memorial Park. Students would like to see the graffiti removed from the playground structures and possibly more security at the park. One student even mentioned the possibility of security cameras or lights to help stop vandalism.

Other Suggestions/Ideas:

- Improved basketball courts at Northside Park and Memorial Park
- Ice cream stand
- Separate basketball court for adults and kids at Memorial Park
- Activities for teenage kids children, karaoke, dance parties
- Better upkeep of the skate park at Northside Park
- More water fountains at the parks and bathrooms opened all day
- Splash zone area

Mr. Beard gave a brief overview of the proposed plan and thanked everyone for their input and attendance.

The Public Hearing was closed at 2:15 p.m.

Marcia Hukill  
Otsego Community Ed Coordinator

The Otsego Community Recreation Board held a Public Hearing on Tuesday, June 2nd, at the Otsego Township Hall.

The meeting was called to order by Thad Beard at 7:00 p.m. with the following Recreation Board Members present: Marcia Hukill, Scott Reitenour. Also present Molly Wieber Otsego Main St Manager, Gordon Konkle City of Otsego Police Chief, Joan Squibbs Otsego Township Treasurer and various other members of the Community.

Mr. Beard opened the Public Hearing at 7:00 p.m.

Mr. Beard welcomed the audience and thanked them for attending the meeting. He gave a brief overview of the purpose of the Public Hearing, stating that the Otsego Community Recreation Five Year Master Plan needed to be updated. There are many ways that the Board is attempting to receive the input from the community to update the Plan.

He explained on how the Recreation Council has been gathering information, surveys were sent to the 5<sup>th</sup> and 7<sup>th</sup> grade students to fill out. Surveys were also available at the spring Parent/Teacher Conferences for members of the community to give their input. The first Public Hearing was held at Otsego Public School on May 29th and the second Public Hearing being held today. During the first public hearing 12 members of the 7<sup>th</sup> grade class were in attendance and were given the opportunity to give their thoughts and ideas for improvements. The Council will then present a Five Year Plan to Otsego Township, the Otsego School Board, and the City of Otsego for final approval, before sending the Plan to the Michigan Department of Natural Resources for consideration.

Mr. Beard gave a PowerPoint presentation that included: Recreational Opportunities, Memorial Park, Brookside Park, Northside Park, Otsego Public Schools, privately owned facilities, and County Park Systems. At the conclusion of the presentation, Mr. Beard asked for input from the audience.

Suggestions/Ideas:

- Community Days
- Fourth of July fireworks
- Extended fencing on ball fields or install netting on existing fencing, allowing to host adult softball tournaments
- Kickball leagues for adults and kids
- Improved basketball courts at Northside Park
- Easier access to concession stand for night time security by the police at Memorial Park
- Move skate park to a more populated area (possibly by the ice rink area)
- Street vendors/ice cream stands
- Removal of graffiti on all play structures
- Activities for teenage kids children, karaoke, dance parties
- Better upkeep of the play structure at Northside Park including the removal of bees and wasps
- More water fountains at the parks

Mr. Beard gave a brief overview of the proposed plan and thanked everyone for their input and attendance.

The Public Hearing was closed at 8:30 p.m.

Marcia Hukill  
Otsego Community Ed Coordinator

---

**RESOLUTION TO APPROVE COMMUNITY RECREATION PLAN**


**Regular Meeting  
August 10, 2015**

---

Motion by Reitenour support by Sleeman to approve the Community Five Year Recreation Plan (Jun 2015 – Dec 2020) between the City of Otsego, Otsego Public Schools and Otsego Township, as recommended by the Superintendent.

AYES: Campbell, Herm, Reitenour, Sleeman and Stafford

NAYS: None

  
Wendy E. Stafford, Secretary  
Board of Education

OTSEGO TOWNSHIP  
OTSEGO MICHIGAN

The following resolution was offered by Squibs and supported by Moll.

RESOLUTION NO. 2015-4

A RESOLUTION ADOPTING THE OTSEGO COMMUNITY RECREATION PLAN

WHEREAS, the Otsego Community Recreation Council has undertaken a Five Year Parks and Recreation Plan which describes the physical features, existing recreation facilities and the desired actions to be taken to improve and maintain recreation facilities during the period between 2015 and 2020; and

WHEREAS, public comment sessions were held on May 29, 2015, at Otsego Public Schools and on June 2, 2015, at the Otsego Township Hall, to provide an opportunity for citizens to express opinions, ask questions, and discuss all aspects of the Recreation Plan; and

WHEREAS, the Otsego Community Recreation Council has developed the plan for the benefit of the entire community and to adopt the plan as a document to assist in meeting the recreation needs of the community; and

WHEREAS, after the public hearing, the Otsego Recreation Council voted to adopt said Recreation Plan; and

NOW, THEREFORE LET IT BE RESOLVED, the Township of Otsego does hereby adopt the Otsego Community Recreation Plan as a guideline for improving recreation for the residents of the City of Otsego.

YEAS: McPherson, Burns, Moll, Bumgart, Squibbs, Hunt and Winn

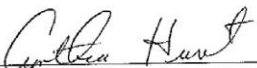
NAYS: None

ABSTAIN: None

ABSENT: None

RESOLUTION DECLARED ADOPTED.

Date July 13, 2015

  
Cynthia Hunt, Township Clerk



## **CITY OF OTSEGO**

**117 East Orleans Street, Otsego, Michigan 49078-1199**

**Phone: (269) 692-3391**

**Fax: (269) 692-2643**

Commissioner Trobeck offered the following resolution and moved for its adoption, seconded by Commissioner Misner.

**CITY OF OTSEGO  
MICHIGAN**

**RESOLUTION NO. 2015-21**

**A RESOLUTION ADOPTING THE OTSEGO COMMUNITY RECREATION PLAN**

WHEREAS, the Otsego Community Recreation Council has undertaken a Five Year Parks and Recreation Plan which describes the physical features, existing recreation facilities and the desired actions to be taken to improve and maintain recreation facilities during the period between 2015 and 2020; and

WHEREAS, public comment sessions were held on May 29, 2015, at Otsego Public Schools and on June 2, 2015, at the Otsego Township Hall, to provide an opportunity for citizens to express opinions, ask questions, and discuss all aspects of the Recreation Plan; and

WHEREAS, the Otsego Community Recreation Council has developed the plan for the benefit of the entire community and to adopt the plan as a document to assist in meeting the recreation needs of the community; and

WHEREAS, after the public hearing, the Otsego Recreation Council voted to adopt said Recreation Plan; and

NOW, THEREFORE LET IT BE RESOLVED, the City of Otsego does hereby adopt the Otsego Community Recreation Plan as a guideline for improving recreation for the residents of the City of Otsego.

YEAS: Commissioners: Tom Gilmer, Kathy Misner, Cyndi Trobeck, and Matt Shankle.


NAYS: Commissioners: None.

ABSTAIN: Commissioners: None.

ABSENT: Commissioners: Ryan Wieber.

RESOLUTION DECLARED ADOPTED.

June 15, 2015

  
Angela M. Cronen, City Clerk

**Come to work, come to play, come to stay!**

## **GOALS AND OBJECTIVES**

### **Mission Statement**

The mission of the Otsego Recreation Council is to provide a variety of recreational, educational, and leisure programs and facilities that meet the needs of the entire community of children, young adults, adults, and senior citizens.

### **Long Range Goals and Objectives**

As a result of the public input meetings, and through the course of regular planning meetings held by the Recreation Council, the following goals and objectives have been established:

1. To conserve existing land and water resources for future generations and begin to actively participate in land acquisitions of vital pieces of property available along the river and within the Township. As listed in the CIP, the Township is always seeking to acquire river front property, specifically to add to or extend the river front path.
2. To seek out the assistance and cooperation of other agencies and organizations within the community in order to continue to provide more varied and increased recreational opportunities. This goal is not addressed specifically in this plan.
3. To seek out various available federal, state, and foundation grants to aid in funding for the development of facilities and for providing programs. By utilizing the City and Township staff, as well as professional consultants, the Recreation Council will continue to explore grant funding opportunities to assist with Future Park and facility development.
4. To enhance the overall physical appearance of the community in order to improve the overall quality of life and vitality of the community.
  - a. Specific objectives outlined in the Plan to achieve this include:
    - i. Substantial site improvements at Memorial Park.
    - ii. Proposed construction of final phase of river front walking trail.
5. To encourage the development of balanced recreational opportunities for both active and passive participation, and for all levels of physical and mental abilities, by enhancing or constructing natural and built facilities.
  - a. Specific objectives outlined in the Plan to achieve this include:
    - i. Substantial site improvements at Memorial Park
    - ii. Proposed construction of final phase of river front walking trail.
    - iii. Additional and repair of skate park ramps for Northside Park.
    - iv. Construct interpretive trail at middle school/high school campus.
    - v. Construct ADA compliant sidewalks as necessary at the three City parks.
    - vi. To provide visitors to the Otsego community with comfortable and attractive places for rest and refreshment.
  - b. Specific objectives outlined in the Plan to achieve this include:
    - i. Proposed construction of final phase of river front walking trail.

## **ACTION PROGRAM**

In this section we describe the proposed projects, as indicated in the Capital Improvement Plan (CIP), and how the Otsego Recreation Council plans to implement or develop them over the next five years.

### **Proposed Projects**

**Project:** Prepare master plan for Memorial Park and multiple site improvements for Memorial Park.

**Long term goal(s) and objective(s) met:** To enhance the overall physical appearance of the community in order to improve the overall quality of life and vitality of the community; to encourage the development of balanced recreational opportunities for both active and passive participation, and for all levels of physical and mental abilities, by enhancing or constructing natural and built facilities.

**Recreation Council Action:** As part of this plan, the Recreation Council is looking into contracting with a consultant to have a master plan/study prepared for Memorial Park. During the development of this plan, the Council determined that developing a master plan for the park would be the logical first step in determining the best sequence for the proposed park improvements. In addition to the Master Plan described above, the Rec. Council is investigating grant funding opportunities.

**Project:** Enhance an interpretive trail for middle school/high school campus.

**Long term goal(s) and objective(s) met:** To encourage the development of balanced recreational opportunities for both active and passive participation, and for all levels of physical and mental abilities, by enhancing or constructing natural and built facilities.

**Recreation Council Action:** This work is already planned and in progress.

**Project:** Enhancement of West Campus including fencing and pavilion.

**Long term goal(s) and objective(s) met:** To encourage the development of balanced recreational opportunities for both active and passive participation, and for all levels of physical and mental abilities, by enhancing or constructing natural and built facilities.

**Recreation Council Action:** The Council is investigating grant funding opportunities.

**Project:** Construct Phase III of the River Front Trail ultimately connecting Northside Park and Brookside Park.

**Long term goal(s) and objective(s) met:** To enhance the overall physical appearance of the community in order to improve the overall quality of life and vitality of the community; to encourage the development of balanced recreational opportunities for both active and passive participation, and for all levels of physical and mental abilities, by enhancing or constructing natural and built facilities; to provide visitors to the Otsego community with



comfortable and attractive places for rest and refreshment; to preserve historic and scenic areas within the community.

**Recreation Council Action:** The Council is investigating property acquisition and grant funding opportunities.

**Project:** Enhance barrier free access at all City parks.

**Long term goal(s) and objective(s) met:** To encourage the development of balanced recreational opportunities for both active and passive participation, and for all levels of physical and mental abilities, by enhancing or constructing natural and built facilities;

**Recreation Council Action:** The Council is investigating funding opportunities. They are also communicating with the City Department of Public Works to see about including this work with other future City sidewalk construction.

ATTACHMENTS:

**Angela Cronen**

---

**From:** Angela Cronen  
**Sent:** Monday, August 17, 2015 9:13 AM  
**To:** Dave Bee (dbee@wmrpc.org)  
**Cc:** Thad Beard  
**Subject:** Otsego Community 5 Year Recreation Plan  
**Attachments:** 2015 REC PLAN.pdf

Mr. Bee,

Please find attached an amended 5 Year Plan for the Otsego Area Recreation Council. The Council intends to submit the amended plan to the State for recognition as soon as you are able to review and comment on it.

Thank you in advance,

*Angela Cronen*

Angela Cronen, MMC  
City Clerk  
City of Otsego  
117 E Orleans St  
Otsego MI 49078  
269-692-3391  
[acronen@cityofotsego.org](mailto:acronen@cityofotsego.org)



Visit us on the web at <http://www.cityofotsego.org/>

Follow us on Facebook - *City of Otsego, Michigan*

**CONFIDENTIALITY:**

The information contained in this electronic message and any attachments is intended for the use of the individual or entity to whom it is addressed and may contain legally privileged, confidential information and/or work product. If the reader of this message is not the intended recipient, you are hereby notified that any use, dissemination, distribution, or forwarding of this electronic message is strictly prohibited.



Michigan Department of Natural Resources - Grants Management

PUBLIC OUTDOOR RECREATION GRANT  
POST-COMPLETION SELF-CERTIFICATION REPORT

This information required under authority of Part 19, PA 451 of 1994, as amended;  
the Land and Water Conservation Fund Act of 1965, 78 Stat. 897 (1964); and Part 715, of PA 451 of 1994, as amended.

GRANT TYPE: ☒ MICHIGAN NATURAL RESOURCES TRUST FUND ☐ CLEAN MICHIGAN INITIATIVE  
(Please select one) ☐ LAND AND WATER CONSERVATION FUND ☐ RECREATION PASSPORT ☐ BOND FUND

GRANTEE: City of Otsego

PROJECT NUMBER: TF88-210

PROJECT TYPE: Development

PROJECT TITLE: Brookside Park

PROJECT SCOPE: Picnic/play area, canoe launch area, campground, picnic shelter/playground area, nature trail and driveway paving

TO BE COMPLETED BY LOCAL GOVERNMENT AGENCY (GRANTEE)

Name of Agency (Grantee)	Contact Person	Title
<u>City of Otsego</u>	<u>Thad Beard</u>	<u>City Manager</u>
Address	Telephone	
<u>117 E Orleans</u>	<u>269-693-3391</u>	
City, State, ZIP	Email	
<u>Otsego MI 49078</u>	<u>tbeard@cityofotsego.org</u>	

SITE DEVELOPMENT

Any change(s) in the facility type, site layout, or recreation activities provided? ☐ Yes ☒ No  
If yes, please describe change(s).

Has any portion of the project site been converted to a use other than outdoor recreation? If yes, please describe what portion and describe use. (This would include cell towers and any non-recreation buildings.) ☐ Yes ☒ No

Are any of the facilities obsolete? If yes, please attach a letter of obsolescence stating what facility is now obsolete and what has been done or is planned to be done with the site the facility was located on. ☐ Yes ☒ No

SITE QUALITY

\* Is there a park entry sign which identifies the property or facility as a public recreation area? ☒ Yes ☐ No  
If yes, please provide a photograph of the sign. If no, please explain.

Are the facilities and the site being properly maintained? If no, please explain. ☒ Yes ☐ No

Is vandalism a problem at this site? If yes, explain the measures being taken to prevent or minimize vandalism. ☐ Yes ☒ No

Page 1

PR1814 (Rev. 07/10/2014)

**POST COMPLETION SELF-CERTIFICATION REPORT - CONT'D**

Is maintenance scheduled on a regular basis? If yes, give schedule. If no, please explain. ☒ Yes ☐ No  
Monthly Park Inspection is done, if something needs attention we fix it sooner  
Trash pickup 2 times a week.

**GENERAL**

Is a Program Recognition sign permanently displayed at the site? If yes, please provide a photograph. (Not required for Bond Fund Grants) ☒ Yes ☐ No ☐ N/A

Is any segment of the general public restricted from using the site or facilities? (i.e. resident only, league only, boaters only, etc.) If yes, please explain. ☐ Yes ☒ No

Is a fee charged for use of the site or facilities? If yes, please provide fee structure. ☒ Yes ☐ No  
Campsite's only - \$5.00 Tent site per Day, \$10.00 improved site per Day, 72 hr. Max.

What are the hours and seasons for availability of the site?

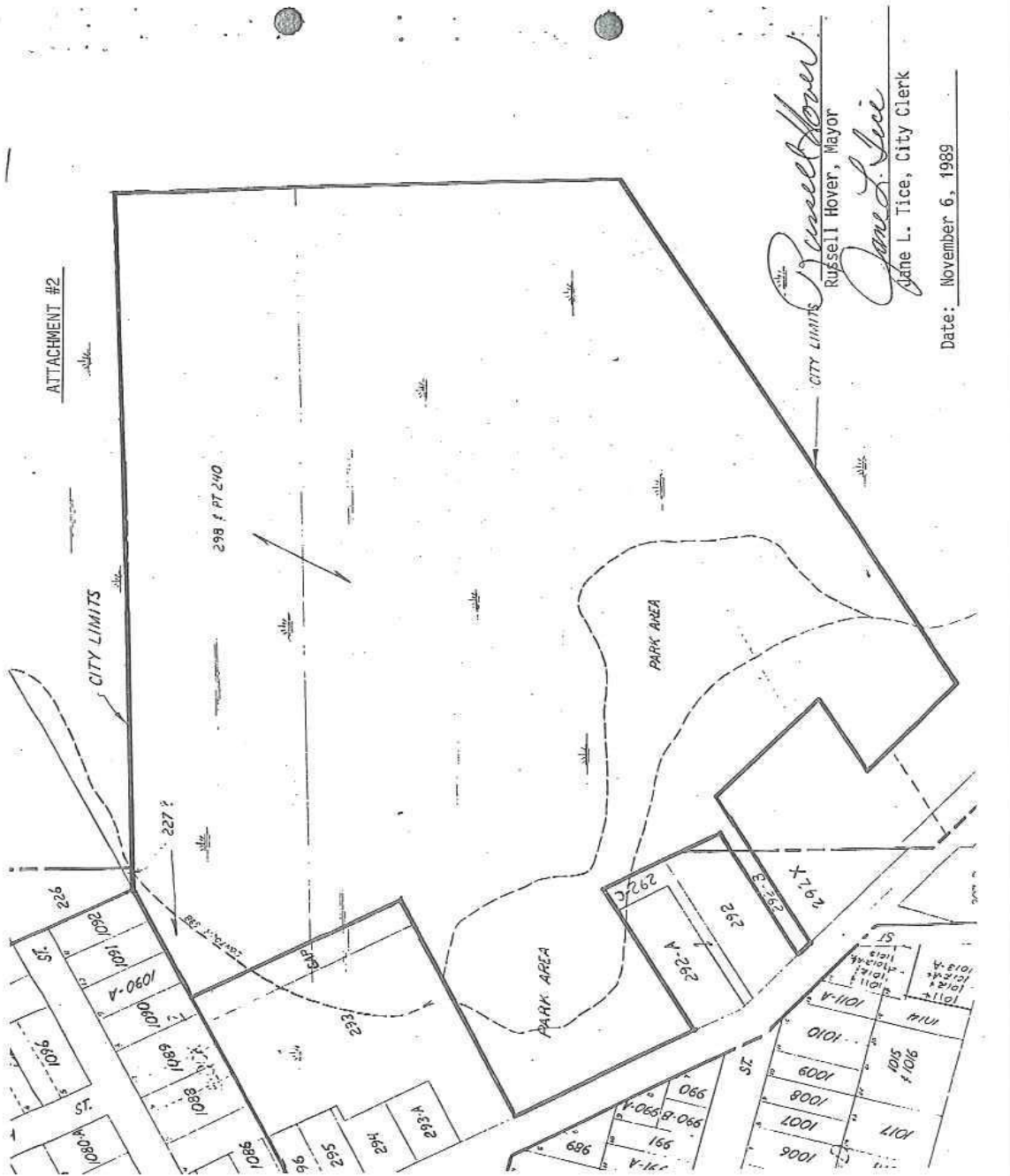
Park hrs are Sunrise until 10:00 pm

**COMMENTS (ATTACH SEPARATE SHEET IF MORE SPACE IS NEEDED)**

**POST COMPLETION SELF-CERTIFICATION REPORT - CONT'D**

CERTIFICATION		
<i>I do hereby certify that I am duly elected, appointed and/or authorized by the Grantee named above and that the information and answers provided herein are true and accurate to the best of my personal knowledge, information and belief.</i>		
<u>Thad M. Beard</u> <small>Please print</small>	<u></u> <small>Grantee Authorized Signature</small>	<u>6-22-15</u> <small>Date</small>
<u>Angela M. Cronin</u> <small>Please print</small>	<u></u> <small>Witness Signature</small>	<u>6/22/15</u> <small>Date</small>

Send completed report to: POST COMPLETION GRANT INSPECTION REPORTS  
GRANTS MANAGEMENT  
MICHIGAN DEPARTMENT OF NATURAL RESOURCES  
PO BOX 30425  
LANSING MI 48909-7925







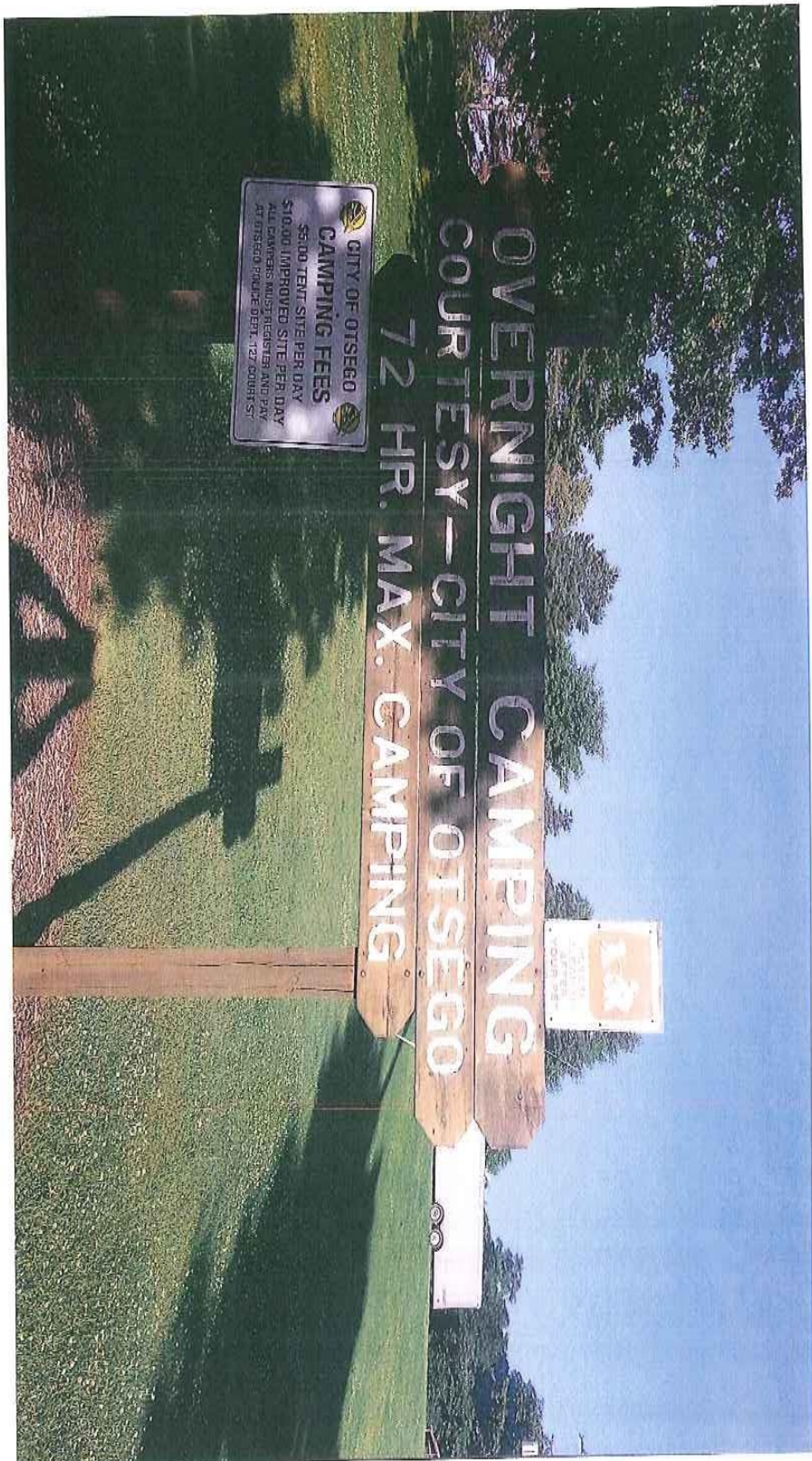












**Otsego Community 5 Year Recreation Plan**  
**City of Otsego**



Michigan Department of Natural Resources - Grants Management

**PUBLIC OUTDOOR RECREATION GRANT  
 POST-COMPLETION SELF-CERTIFICATION REPORT**

This information required under authority of Part 19, PA 451 of 1994, as amended;  
 the Land and Water Conservation Fund Act of 1965, 78 Stat. 897 (1964); and Part 715, of PA 451 of 1994, as amended.

**GRANT TYPE:** ☐ MICHIGAN NATURAL RESOURCES TRUST FUND ☐ CLEAN MICHIGAN INITIATIVE  
 (Please select one) ☐ LAND AND WATER CONSERVATION FUND ☐ RECREATION PASSPORT ☒ BOND FUND

**GRANTEE:** City of Otsego

**PROJECT NUMBER:** BF93-359

**PROJECT TYPE:** Development

**PROJECT TITLE:** Memorial Park

**PROJECT SCOPE:** Fencing, replace 2 basketball courts, replace 2 tennis courts, play equipment, 2 sand volleyball courts, restroom/concession building, rocket football irrigation, paved parking and paved walks

**TO BE COMPLETED BY LOCAL GOVERNMENT AGENCY (GRANTEE)**

Name of Agency (Grantee)	Contact Person	Title
<u>City of Otsego</u>	<u>Thad Beard</u>	<u>City Manager</u>
Address	Telephone	
<u>117 E Orleans</u>	<u>269-692-3391</u>	
City, State, ZIP	Email	
<u>Otsego, MI 49078</u>	<u>tbeard@cityofotsego.org</u>	

**SITE DEVELOPMENT**

Any change(s) in the facility type, site layout, or recreation activities provided? ☐ Yes ☒ No  
 If yes, please describe change(s).

Has any portion of the project site been converted to a use other than outdoor recreation? If yes, please describe what portion and describe use. (This would include cell towers and any non-recreation buildings.) ☐ Yes ☒ No

Are any of the facilities obsolete? If yes, please attach a letter of obsolescence stating what facility is now obsolete and what has been done or is planned to be done with the site the facility was located on. ☐ Yes ☒ No

**SITE QUALITY**

Is there a park entry sign which identifies the property or facility as a public recreation area? ☒ Yes ☐ No  
 If yes, please provide a photograph of the sign. If no, please explain.

Are the facilities and the site being properly maintained? If no, please explain. ☒ Yes ☐ No

Is vandalism a problem at this site? If yes, explain the measures being taken to prevent or minimize vandalism. ☒ Yes ☐ No

Page 1

PR1944 (Rev. 07/10/2014)

**POST COMPLETION SELF-CERTIFICATION REPORT - CONT'D**

Signs, Camera's and police

Is maintenance scheduled on a regular basis? If yes, give schedule. If no, please explain. ☒ Yes ☐ No

Weekly mowing, trash and path inspection

**GENERAL**

Is a Program Recognition sign permanently displayed at the site? If yes, please provide a photograph. (Not required for Bond Fund Grants) ☒ Yes ☐ No ☐ N/A

Is any segment of the general public restricted from using the site or facilities? (i.e. resident only, league only, boaters only, etc.) If yes, please explain. ☐ Yes ☒ No

Is a fee charged for use of the site or facilities? If yes, please provide fee structure. ☐ Yes ☒ No

What are the hours and seasons for availability of the site?

Summer until 10:00 pm

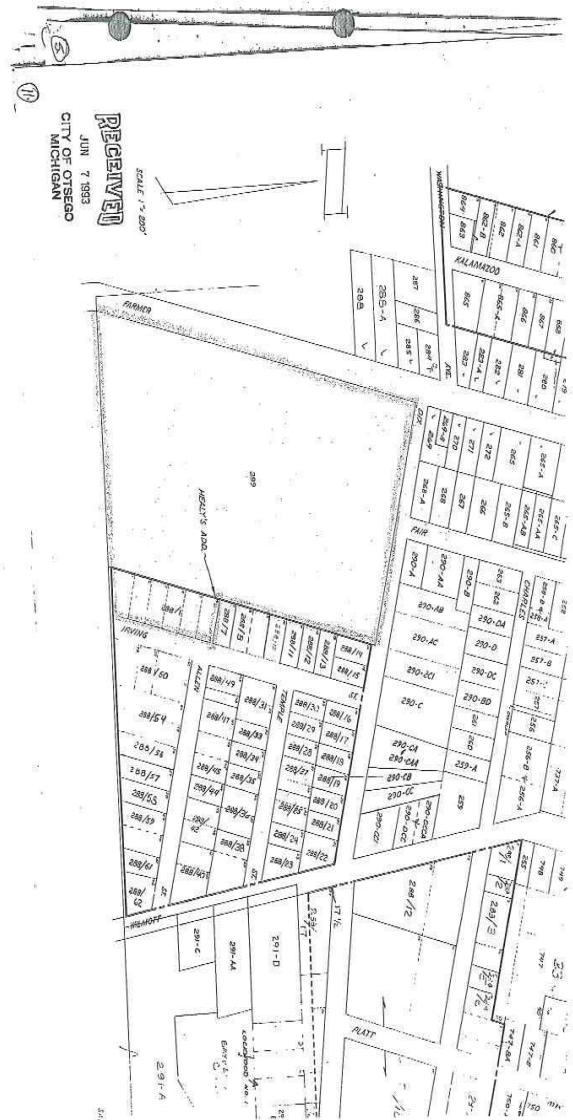
**COMMENTS (ATTACH SEPARATE SHEET IF MORE SPACE IS NEEDED)**



**POST COMPLETION SELF-CERTIFICATION REPORT - CONT'D**

CERTIFICATION		
<i>I do hereby certify that I am duly elected, appointed and/or authorized by the Grantee named above and that the information and answers provided herein are true and accurate to the best of my personal knowledge, information and belief.</i>		
<u>Thad M. Beard</u> <small>Please print</small>	<u></u> <small>Grantee Authorized Signature</small>	<u>6-22-15</u> <small>Date</small>
<u>Angela M Cronen</u> <small>Please print</small>	<u></u> <small>Witness Signature</small>	<u>6/22/15</u> <small>Date</small>

Send completed report to: POST COMPLETION GRANT INSPECTION REPORTS  
GRANTS MANAGEMENT  
MICHIGAN DEPARTMENT OF NATURAL RESOURCES  
PO BOX 30425  
LANSING MI 48909-7925













**Otsego Community 5 Year Recreation Plan**  
**City of Otsego**



Michigan Department of Natural Resources - Grants Management

**PUBLIC OUTDOOR RECREATION GRANT  
POST-COMPLETION SELF-CERTIFICATION REPORT**

This information required under authority of Part 19, PA 451 of 1994, as amended;  
the Land and Water Conservation Fund Act of 1965, 78 Stat. 897 (1964); and Part 715, of PA 451 of 1994, as amended.

GRANT TYPE: ☐ MICHIGAN NATURAL RESOURCES TRUST FUND ☐ CLEAN MICHIGAN INITIATIVE  
(Please select one) ☐ LAND AND WATER CONSERVATION FUND ☐ RECREATION PASSPORT ☒ BOND FUND

GRANTEE: City of Otsego

PROJECT NUMBER: BF95-080

PROJECT TYPE: Development

PROJECT TITLE: Otsego Riverfront Trail

PROJECT SCOPE: Boardwalk, bituminous path, fishing dock/overlook, dam overlook, signage-entry, canoe/small boat launch, grading/filling, landscaping, site furniture, clearing/grubbing and borings

TO BE COMPLETED BY LOCAL GOVERNMENT AGENCY (GRANTEE)	
Name of Agency (Grantee) <u>City of Otsego</u>	Contact Person <u>Thad Beard</u> Title <u>City Manager</u>
Address <u>117 E Orleans</u>	Telephone <u>269-692-3391</u>
City, State, ZIP <u>Otsego, MI 49078</u>	Email <u>tbeard@cityofotsego.org</u>
<b>SITE DEVELOPMENT</b>	
Any change(s) in the facility type, site layout, or recreation activities provided? If yes, please describe change(s). <span style="float:right"><input type="checkbox"/> Yes <input checked="" type="checkbox"/> No</span>	
Has any portion of the project site been converted to a use other than outdoor recreation? If yes, please describe what portion and describe use. (This would include cell towers and any non-recreation buildings.) <span style="float:right"><input type="checkbox"/> Yes <input checked="" type="checkbox"/> No</span>	
Are any of the facilities obsolete? If yes, please attach a letter of obsolescence stating what facility is now obsolete and what has been done or is planned to be done with the site the facility was located on. <span style="float:right"><input type="checkbox"/> Yes <input checked="" type="checkbox"/> No</span>	
<b>SITE QUALITY</b>	
* Is there a park entry sign which identifies the property or facility as a public recreation area? If yes, please provide a photograph of the sign. If no, please explain. <span style="float:right"><input type="checkbox"/> Yes <input checked="" type="checkbox"/> No</span>	
Are the facilities and the site being properly maintained? If no, please explain. <span style="float:right"><input checked="" type="checkbox"/> Yes <input type="checkbox"/> No</span>	
Is vandalism a problem at this site? If yes, explain the measures being taken to prevent or minimize vandalism. <span style="float:right"><input type="checkbox"/> Yes <input checked="" type="checkbox"/> No</span>	

Page 1

PR1844 (Rev. 07/10/2014)

**POST COMPLETION SELF-CERTIFICATION REPORT - CONT'D**

Is maintenance scheduled on a regular basis? If yes, give schedule. If no, please explain.

☒ Yes ☐ No

weekly, mowing, trash pickup, during summer months

**GENERAL**

Is a Program Recognition sign permanently displayed at the site? If yes, please provide a photograph. (Not required for Bond Fund Grants)

☐ Yes ☒ No ☒ N/A

Is any segment of the general public restricted from using the site or facilities? (i.e. resident only, league only, boaters only, etc.) If yes, please explain.

☐ Yes ☒ No

Is a fee charged for use of the site or facilities? If yes, please provide fee structure.

☐ Yes ☒ No

What are the hours and seasons for availability of the site?

Summer, until 10:00 pm

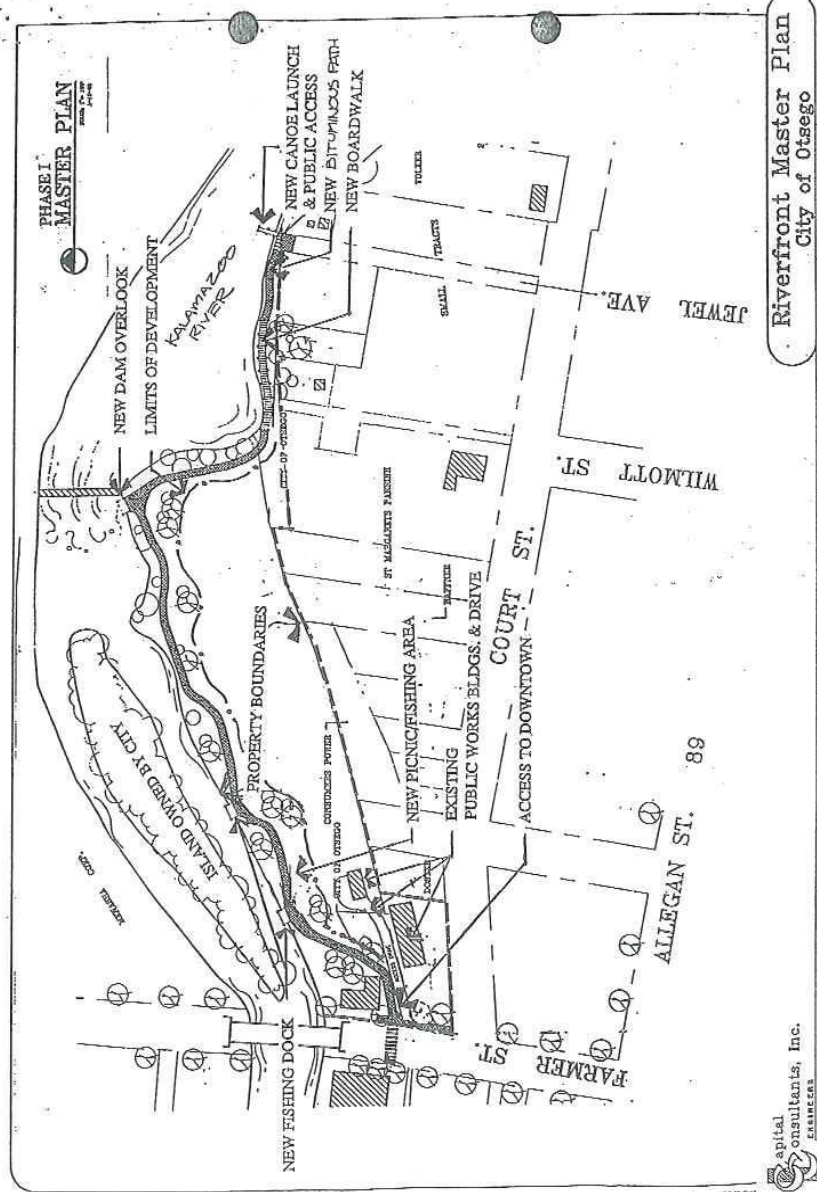
**COMMENTS (ATTACH SEPARATE SHEET IF MORE SPACE IS NEEDED)**

**POST COMPLETION SELF-CERTIFICATION REPORT - CONT'D**

CERTIFICATION		
<i>I do hereby certify that I am duly elected, appointed and/or authorized by the Grantee named above and that the information and answers provided herein are true and accurate to the best of my personal knowledge, information and belief.</i>		
<u>Thad M. Beard</u> <small>Please print</small>	<u></u> <small>Grantee Authorized Signature</small>	<u>6-22-15</u> <small>Date</small>
<u>Angela M. Croner</u> <small>Please print</small>	<u></u> <small>Witness Signature</small>	<u>6/22/15</u> <small>Date</small>

Send completed report to: POST COMPLETION GRANT INSPECTION REPORTS  
GRANTS MANAGEMENT  
MICHIGAN DEPARTMENT OF NATURAL RESOURCES  
PO BOX 30425  
LANSING MI 48909-7925







Michigan Department of Natural Resources - Grants Management

**PUBLIC OUTDOOR RECREATION GRANT  
POST-COMPLETION SELF-CERTIFICATION REPORT**

This information required under authority of Part 19, PA 451 of 1994, as amended;  
the Land and Water Conservation Fund Act of 1965, 76 Stat. 897 (1964); and Part 715, of PA 451 of 1994, as amended.

GRANT TYPE: ☐ MICHIGAN NATURAL RESOURCES TRUST FUND ☐ CLEAN MICHIGAN INITIATIVE  
(Please select one) ☒ LAND AND WATER CONSERVATION FUND ☐ RECREATION PASSPORT ☐ BOND FUND

GRANTEE: City of Otsego

PROJECT NUMBER: 26-00907

PROJECT TYPE: Development

PROJECT TITLE: Memorial Park Project

PROJECT SCOPE: Site preparation, 4 ball diamonds with fencing, support facilities including restrooms, concession stand, watering system and parking area and LWCF sign

TO BE COMPLETED BY LOCAL GOVERNMENT AGENCY (GRANTEE)		
Name of Agency (Grantee)	Contact Person	Title
<u>City of Otsego</u>	<u>Thad Beard</u>	<u>City Manager</u>
Address	Telephone	
<u>117 E Orleans</u>	<u>269-692-3391</u>	
City, State, ZIP	Email	
<u>Otsego, MI 49072</u>	<u>tbeard@cityofotsego.org</u>	
<b>SITE DEVELOPMENT</b>		
Any change(s) in the facility type, site layout, or recreation activities provided? <input type="checkbox"/> Yes <input checked="" type="checkbox"/> No If yes, please describe change(s).		
Has any portion of the project site been converted to a use other than outdoor recreation? If yes, please describe what portion and describe use. (This would include cell towers and any non-recreation buildings.) <input type="checkbox"/> Yes <input checked="" type="checkbox"/> No		
Are any of the facilities obsolete? If yes, please attach a letter of obsolescence stating what facility is now obsolete and what has been done or is planned to be done with the site the facility was located on. <input type="checkbox"/> Yes <input checked="" type="checkbox"/> No		
<b>SITE QUALITY</b>		
Is there a park entry sign which identifies the property or facility as a public recreation area? If yes, please provide a photograph of the sign. If no, please explain. <input checked="" type="checkbox"/> Yes <input type="checkbox"/> No		
Are the facilities and the site being properly maintained? If no, please explain. <input checked="" type="checkbox"/> Yes <input type="checkbox"/> No		
Is vandalism a problem at this site? If yes, explain the measures being taken to prevent or minimize vandalism. <input checked="" type="checkbox"/> Yes <input type="checkbox"/> No		

Page 1

PR1041 (Rev. 07/10/2014)

**POST COMPLETION SELF-CERTIFICATION REPORT - CONT'D**

Video cameras and police presence daily

Is maintenance scheduled on a regular basis? If yes, give schedule. If no, please explain. ☒ Yes ☐ No  
Weekly Trash pickup and mowing, utility work inspection

**GENERAL**

Is a Program Recognition sign permanently displayed at the site? If yes, please provide a photograph. (Not required for Bond Fund Grants) ☒ Yes ☐ No ☐ N/A

Is any segment of the general public restricted from using the site or facilities? (i.e. resident only, league only, boaters only, etc.) If yes, please explain. ☐ Yes ☒ No

Is a fee charged for use of the site or facilities? If yes, please provide fee structure. ☐ Yes ☒ No

What are the hours and seasons for availability of the site?

Seasonal until 10:00 pm

**COMMENTS (ATTACH SEPARATE SHEET IF MORE SPACE IS NEEDED)**

POST COMPLETION SELF-CERTIFICATION REPORT - CONT'D

CERTIFICATION		
<i>I do hereby certify that I am duly elected, appointed and/or authorized by the Grantee named above and that the information and answers provided herein are true and accurate to the best of my personal knowledge, information and belief.</i>		
<u>Thad M. Beard</u> <small>Please print</small>	<u></u> <small>Grantee Authorized Signature</small>	<u>6-22-15</u> <small>Date</small>
<u>Angela M. Cronen</u> <small>Please print</small>	<u></u> <small>Witness Signature</small>	<u>6/22/15</u> <small>Date</small>

Send completed report to: POST COMPLETION GRANT INSPECTION REPORTS  
GRANTS MANAGEMENT  
MICHIGAN DEPARTMENT OF NATURAL RESOURCES  
PO BOX 30425  
LANSING MI 48909-7925



